



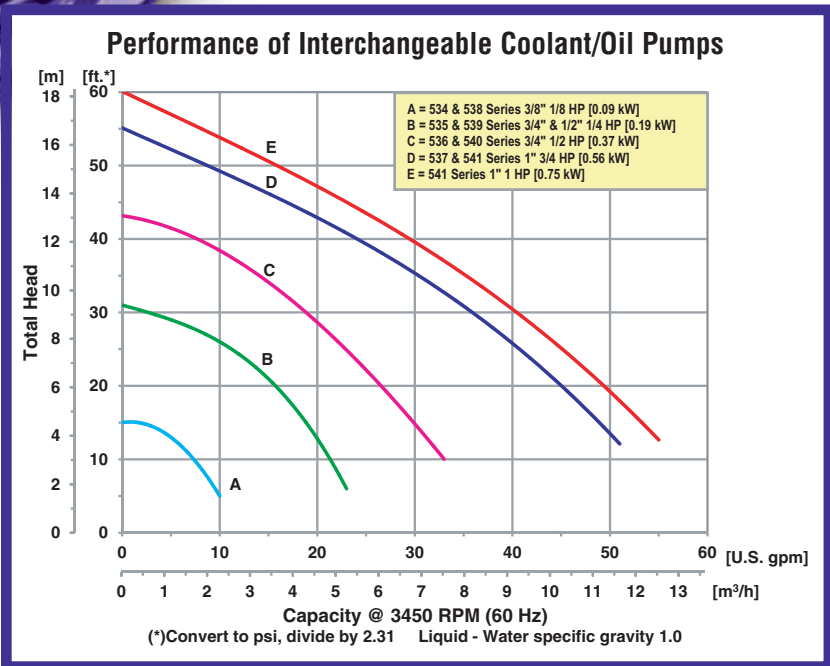
# Interchangeable Immersion & Suction Coolant/Oil Pumps



Immersion Type Pump

- **Fully Interchangeable with Units Furnished on Most Imported Machine Tools**
- **1/8 to 1 HP Totally Enclosed Motors**
- **2 Pole, 3450 RPM**
- **Single or Three Phase Motors**
- **Stainless Steel Semi-Open Impeller**
- **Cast Iron Construction**
- **Maximum Temperature 180° F**
- **Maximum Flow 56 GPM (Water)**
- **Maximum Head 60 Ft. (Water)**

Suction Type Pump



AMT Interchangeable Coolant/Oil pumps are dependable, economical replacement pumps equivalent to units supplied with both domestic and foreign made machine tools such as Fuji, Mitsubishi, Toshiba, Hitachi and many others. These pumps are designed for the circulation and spraying of coolants and cutting oils. Pumps are available with a stainless steel impeller for added corrosion/erosion resistance and durability. 1/8 & 1/4 HP models are available in 115/230 VAC, 60 Hz single phase and 230/460 VAC, 50/60 Hz three phase. Motors are Totally Enclosed with sealed bearings and operate at 3450 RPM. Pumps feature semi-open impellers that are ideal for handling some solids and fine contaminants.

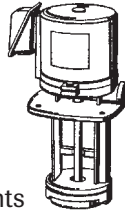
**MESA AGRO-INDUSTRIAL CORP.**  
 BOMBAS DE AGUA --FILTROS --COMPRESORES DE AIRE --GENERADORES DE ELECTRICIDAD  
 TRACTORES E IMPLEMENTOS AGRICOLAS --PISTEROS Y SISTEMAS DE RIEGO --MANGAS --VALVULAS  
 TELS. 939-338-0607 --787-636-2132 - FAX. 787-740-0960  
 E-mail: mesaagro@hotmail.com - www.mesapr.com



For use with nonflammable liquids compatible with pump component materials.

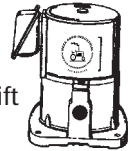
## Immersion Type Features<sup>†</sup>

- Cast Iron Construction
- Stainless Steel Impeller
- Carbon Steel Shaft
- Sealless Design for Pumping Abrasives
- Pumps Liquids Down to 2'
- Ideally Suited for Pumping Fine Contaminants



## Suction Type Features<sup>\*</sup>

- Cast Iron Construction
- Stainless Steel Impeller
- Carbon Steel Shaft
- Carbon/Ceramic Shaft Seal
- Self-Priming up to 2' - Maximum Suction Lift
- Pumps Must be Mounted Above Liquid



### Cross Reference to Replacement of Standard Machine Tool Industry Pumps

Fuji	Old Fuji	Mitsubishi	Toshiba	Hitachi	Yasukawa	Graymills	Gusher	Stainless Impeller Model
VKN-043A	VKN-041A	-	-	CPS-041	VFPC-01F	IMS-08	VBH-18	5340-95
VKN-053A	VKN-051A	NP-60J	OPF-60M	CPS-063	VFPC-061F	IMS-08	VBH-18	5341-95
VKN-063A	VKN-061A	NP-100J	OPF-100M	CPS-103	VFPC-101JF	IMS-25	VBH-14	5350-95
VKN-073A	VKN-071A	NP-180J	OPF-180M	CPS-183	VFPC-181JF	IMS-25	VBH-14	5351-95
VKN-083A	VKN-081A	NP-250J	OPF-250M	CPS-253	VFPC-251JF	IMS-50	VBH-12	5360-95
VKN-093A	VKN-091A	NP-400J	OPF-400M	CPS-403	VFPC-401JF	IMS-75	VBH-34	5370-95
-	-	-	-	-	-	IMS-100	VBH-10	5371-95
VKP-043A	VKN-041A	-	-	CPD-041	VFPC-01DL	IMV-08	VBV-18	5380-95
VKP-053A	VKN-051A	NQ-60J	OPF-60M	CPD-60M	VFPC-061DIF	IMV-08	VBV-18	5381-95
VKP-063A	VKN-061A	NQ-100J	OPF-100M	CPD-100M	VFPC-100	IMV-25	VBV-14	5390-95
VKP-073A	VKN-071A	NQ-180J	OPF-180M	CPD-180M	CPD-183	IMV-25	VBV-14	5391-95
VKP-083A	VKN-081A	NQ-250J	OPF-250M	CPD-253	VFPC-250JF	IMV-50	VBV-12	5400-95
VKP-093A	VKN-091A	NQ-400J	OPF-400M	CPD-403	VFPC-4010JF	IMV-75	VBV-34	5410-95

## Pump Dimensional & Specification Data

Model	Curve	Type	HP	PH	Voltage @ 60 Hz+	Full Load Amps	A	B	C	D	E	F NPT	G	H	J	Ship Wt. (Lbs.)
5340-95	A	*SUC	1/8	1	115/230	0.7/0.35	6.8 [172.2]	1.7 [43.2]	5.5 [139.7]	5.5 [139.7]	0.2 [5.1]	3/8"	6.7 [170.2]	0.8 [20.3]	-	14
5341-95	A	*SUC	1/8	3	230/460	0.3/0.19										
5350-95	B	*SUC	1/4	1	115/230	3.0/1.5	8.7 [220.1]	2.5 [63.5]	6.7 [170.2]	7.2 [182.9]	0.3 [7.6]	1/2"	7.8 [198.1]	0.8 [20.3]	-	27
5351-95	B	*SUC	1/4	3	230/460	0.8/0.4										
5360-95	C	*SUC	1/2	3	230/460	1.8/1.25	10.3 [261.6]	2.8 [71.1]	7.7 [195.6]	8.5 [215.9]	0.3 [7.6]	1/2"	7.8 [198.1]	0.8 [20.3]	-	37
5370-95	D	*SUC	3/4	3	230/460	2.6/1.6	12.0 [304.8]	3.0 [76.2]	8.0 [203.2]	8.6 [218.4]	0.3 [7.6]	1"	7.8 [198.1]	0.8 [20.3]	-	41
5380-95	A	†IMM	1/8	1	115/230	0.7/0.35	11.7 [297.2]	6.0 [152.4]	4.8 [122.0]	5.0 [127.0]	0.2 [5.1]	3/8"	6.7 [170.2]	0.8 [20.3]	3.5 [88.9]	15
5381-95	A	†IMM	1/8	3	230/460	0.3/0.19										
5390-95	B	†IMM	1/4	1	115/230	3.0/1.5	13.6 [345.4]	7.0 [177.8]	6.3 [160.0]	6.1 [154.9]	0.3 [7.6]	1/2"	7.8 [198.1]	0.8 [20.3]	4.7 [119.4]	27
5391-95	B	†IMM	1/4	3	230/460	0.8/0.4										
5400-95	C	†IMM	1/2	3	230/460	1.8/1.25	18.3 [464.8]	9.5 [241.3]	7.7 [195.6]	6.7 [170.2]	0.3 [7.6]	3/4"	7.8 [198.1]	0.8 [20.3]	5.3 [134.6]	40
5410-95	D	†IMM	3/4	3	230/460	2.6/1.6	20.6 [523.2]	11.0 [279.4]	7.7 [195.6]	7.3 [184.4]	0.3 [7.6]	1"	7.8 [198.1]	0.8 [20.3]	5.8 [147.3]	48
5411-95	E	†IMM	1	3	230/460	3.2/1.9	20.6 [523.2]	11.0 [279.4]	7.7 [195.6]	7.3 [184.4]	0.3 [7.6]	1"	7.8 [198.1]	0.8 [20.3]	5.8 [147.3]	50

NOTE: Dimensions are in inches (millimeters) and have a tolerance of ±1/8".

(+) 3-Phase models can also operate on 50 Hz. (This will change full load amps, service factor, RPM and performance.)

### MOTOR DATA:

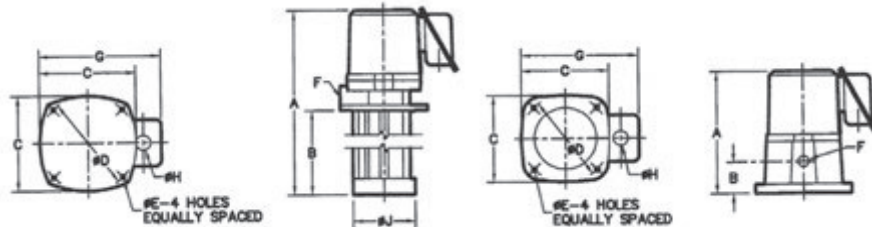
Pumps feature Totally Enclosed motors with sealed, permanently lubricated bearing for protection from dirt, moisture and soil.

Available in:

Single (1) 115/230 VAC 60 Hz

Three (3) 230/460 VAC 50/60 Hz

**Maximum Recommended Viscosity: 500 SSU**



† Immersion-type pumps require no bearings, seals, or packing, ideally suiting them for pumping liquids containing fine contaminants. For circulation of coolant and spraying of cutting oil in all machines, including grinders and applications with higher temperatures.

\* Suction-type pumps must be mounted above the liquid level as well as other remote locations, featuring a 2 ft. maximum suction lift. For circulating coolant, liquids with large amounts of foreign matter and spraying cutting oil in all types of machines, except grinders.

## 3/8" Bronze Coolant Recirculating Pump

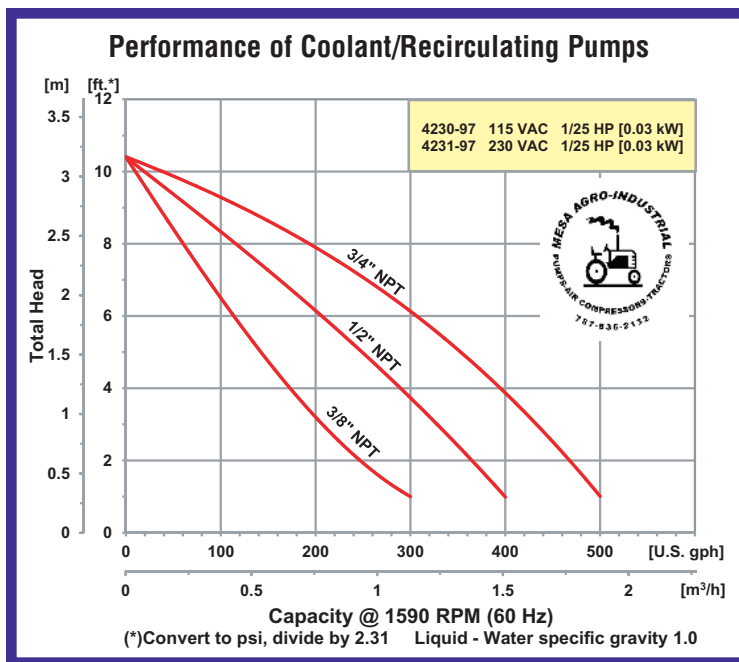
- **Cast Bronze Construction**
- **No Bottom Bearing!!!**
- **Brass Column and Impeller Shaft**
- **Bronze Self-Cleaning Open Impeller**
- **3/8" NPT Discharge Port**
- **Fiber Gasket**
- **Maximum Temperature 200° F**
- **Maximum Flow 8 GPM**
- **Maximum Head 10 Ft.**
- **Available with 115 VAC Single Phase or 230 VAC Single Phase Motors, 1590 RPM**
- **1/25 HP Totally Enclosed Fan Cooled (TEFC) Motor**



Model 4230-97

The AMT Bronze Coolant/Recirculating pump has been manufactured for a wide variety of Industrial/Commercial Coolant and Recirculating applications. The absence of a bottom bearing makes the unit ideal for handling erosive liquids. A 36" 3-conductor power cord is included.

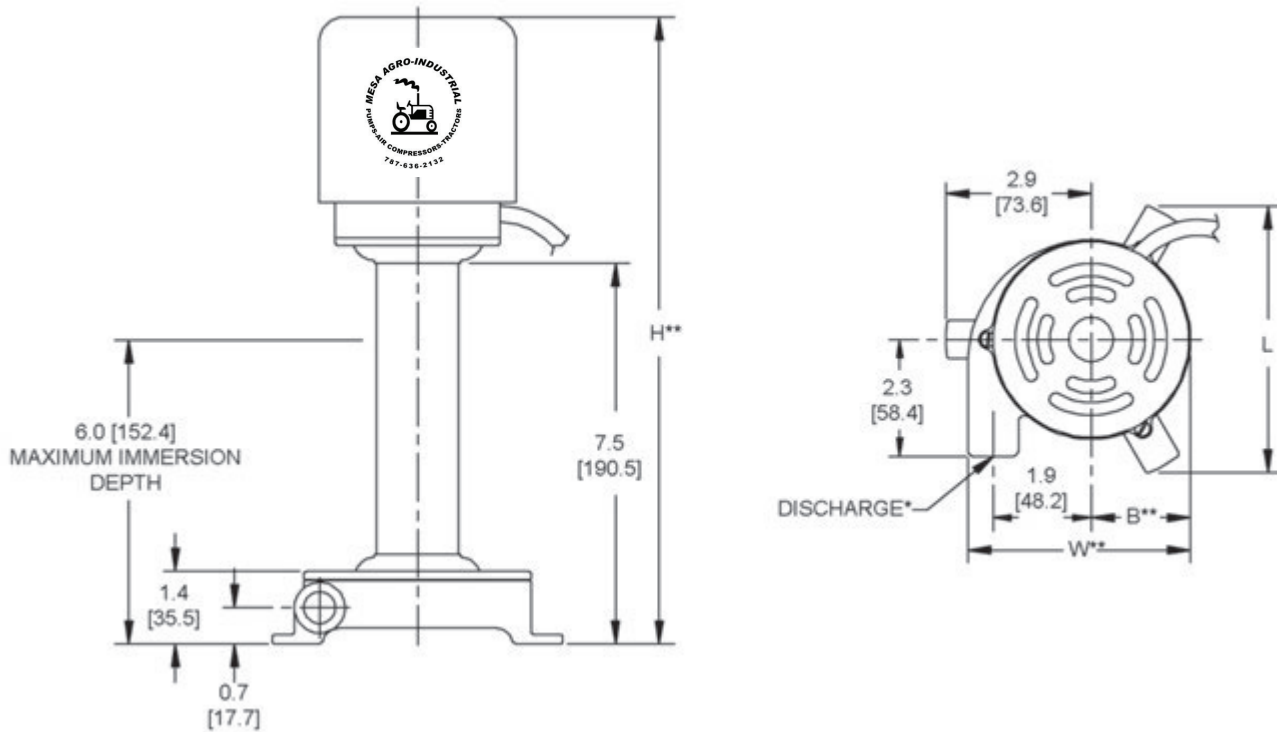
**NOTE: The motor on this pump is not intended to be submerged in liquid. The liquid level should always be at least 2" below motor bottom. (Maximum depth of liquid is 6".)**



**MESA AGRO-INDUSTRIAL CORP.**  
 BOMBAS DE AGUA --FILTROS --COMPRESORES DE AIRE --GENERADORES DE ELECTRICIDAD  
 TRACTORES E IMPLEMENTOS AGRICOLAS --PISTEROS Y SISTEMAS DE RIEGO --MANGAS --VALVULAS  
 TELS. 939-338-0607 --787-636-2132 - FAX. 787-740-0960  
 E-mail: mesaagro@hotmail.com - www.mesapr.com

*For use with nonflammable liquids compatible with pump component materials.*

## Pump Dimensional & Specification Data



Model	HP	PH	ENC	Voltage @ 60 Hz	Full Load Amps	DIS*	A	B**	L	W**	H**	Ship Wt. (Lbs.)
4230-97	1/25	1	TEFC	115	1.50	3/8	6.0 [152.4]	2.0 [50.8]	5.3 [134.6]	4.4 [111.7]	12.4 [314.9]	9
4231-97	1/25	1	TEFC	230	0.75							

(\*) Standard NPT (female) pipe thread.

(\*\*) This dimension may vary due to motor manufacturer's specifications.

NOTE: Dimensions are in inches (millimeters) and have a tolerance of  $\pm 1/8"$ .

NOTE: Electric supply for ALL motors must be within  $\pm 10\%$  of nameplate voltage rating (e.g. 230V  $\pm 10\%$  = 207 to 253).

## Standard Features

- Cast Bronze Construction
- **No Bottom Bearing!!!**
- Brass Column and Impeller Shaft
- Bronze Self-cleaning Open Impeller
- 3/8" NPT Discharge Port
- Fiber Gasket
- Available with 115 VAC or 230 VAC Single Phase Motors
- 1/25 HP Totally Enclosed Fan Cooled (TEFC) Motor
- QSP - Quick Ship Pumps

**Maximum Recommended Viscosity: 900 SSU**

# Heavy Duty Industrial Coolant Pump

- **Cast Iron Casing and Column**
- **3/4" to 1-1/2" NPT Discharge Port**
- **Includes Universal Mounting Bracket**
- **Dual Volute Design Reduces Radial Load on Motor - NO BOTTOM BEARING!**
- **Maximum Temperature 200° F**
- **Maximum Flow 67 GPM**
- **Maximum Head 32 Ft.**
- **Self-Cleaning, Semi-Open Stainless Steel Impeller**
- **Available with Single or Three Phase 56C Motor**
- **1/8 to 3/4 HP Totally Enclosed Fan Cooled (TEFC) Motor, 1725 RPM**



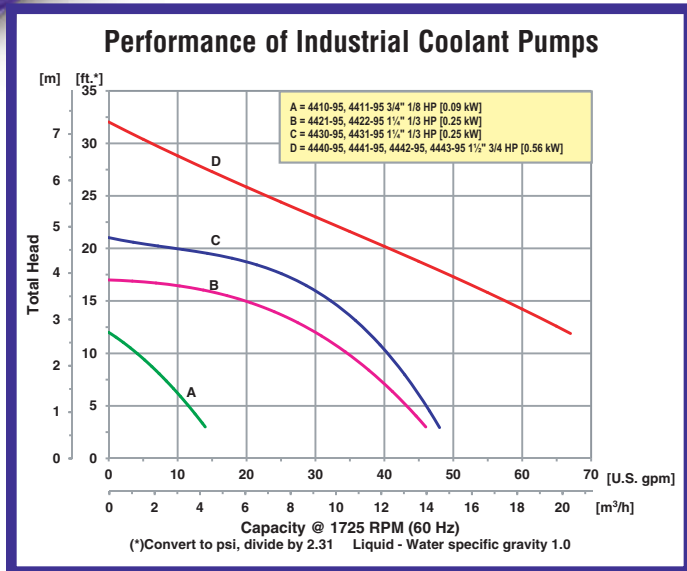
Model 4442-95

Model 4410-95

The AMT Heavy Duty Industrial Coolant pump has been designed for a broad range of Industrial/Commercial coolant and recirculating applications. Back vanes on the impellers of models 4421-95 through 4443-95 balance pressure and thereby eliminate the need for mechanical seals. All models with extended shafts are fitted with aligning coupling between motor and shaft. Dual volute construction of models 4421-95 through 4443-95 eliminates radial thrust and therefore the need for bottom bearings. A Universal mounting bracket system is included with these pumps (see below).

### AMT Mounting Brackets (Included):

Models 4410-90 & 4420-90 mounting brackets are designed to simplify the pump installation/removal process and expand the application range for each pump in the line. With the bracket system, it is no longer necessary to disassemble motor from pump end for installation and removal. Simply unfasten the brackets from the tank cover and insert or remove the complete pump. The bracket system also controls the immersion depth of each pump in the line by clamping to the pump column at the most desirable position.



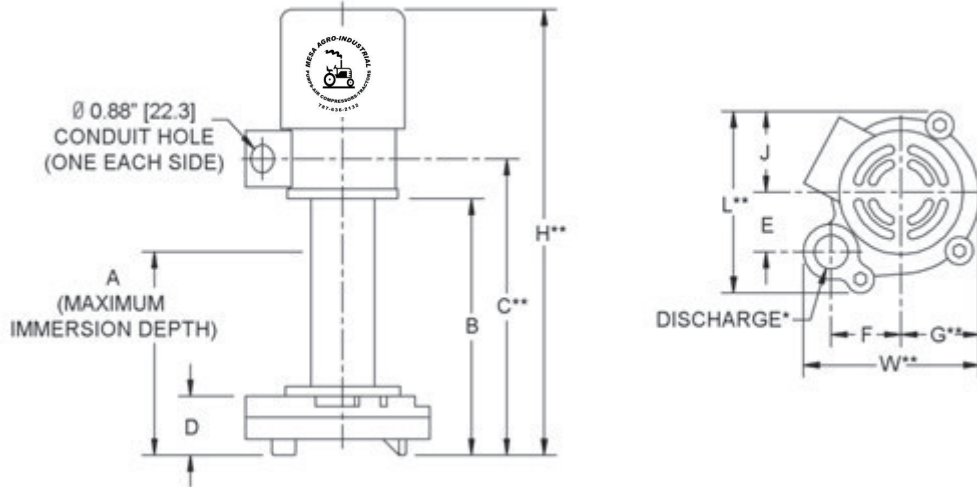
### MESA AGRO-INDUSTRIAL CORP.

BOMBAS DE AGUA --FILTROS --COMPRESORES DE AIRE --GENERADORES DE ELECTRICIDAD  
 TRACTORES E IMPLEMENTOS AGRICOLAS --PISTEROS Y SISTEMAS DE RIEGO --MANGAS --VALVULAS  
 TELS. 939-338-0607 --787-636-2132 - FAX. 787-740-0960  
 E-mail: mesaagro@hotmail.com - www.mesapr.com



For use with nonflammable liquids compatible with pump component materials.

## Pump Dimensional & Specification Data



Model	Curve	HP	PH	ENC	Voltage @ 60 Hz+	Full Load Amps	DIS*	A	B	C**	D	E	F	G**	J	L**	W**	H**	Ship Wt. (Lbs.)
4410-95	A	1/8	1	TEFC	115/230	2/1	3/4	6.3 [160.0]	8.1 [205.9]	9.3 [236.2]	1.9 [48.2]	1.8 [45.7]	2.2 [55.8]	2.5 [63.5]	2.6 [66.0]	5.8 [147.3]	5.5 [139.7]	14.1 [358.1]	16
4411-95		1/8	3	TEFC	230	0.5												14.1 [358.1]	16
4421-95	B	1/3	1	TEFC	115-208/230	7/4	1-1/4	8.2 [208.3]	11.7 [297.2]	17.0 [431.8]	2.2 [55.8]	3.2 [81.3]	3.5 [88.9]	3.7 [93.9]	3.5 [88.9]	8.7 [220.9]	8.4 [213.3]	20.8 [528.3]	44
4422-95		1/3	3	TEFC	208-230/460	2/1												20.6 [523.2]	43
4430-95	C	1/3	1	TEFC	115-208/230	7/4	1-1/4	6.3 [160.0]	9.7 [246.4]	15.3 [388.6]	2.2 [55.8]	3.2 [81.3]	3.5 [88.9]	3.7 [93.9]	3.5 [88.9]	8.7 [220.9]	8.4 [213.3]	19.3 [490.2]	44
4431-95		1/3	3	TEFC	208-230/460	2/1												18.8 [477.5]	41
4440-95	D	3/4	1	TEFC	115-208/230	9/5	1-1/2	6.3 [160.0]	9.8 [248.9]	16.1 [408.9]	2.3 [58.4]	3.9 [99.0]	2.9 [73.6]	5.0 [127.0]	4.9 [124.4]	10.7 [271.7]	9.2 [233.6]	20.2 [513.0]	53
4441-95		3/4	3	TEFC	208-230/460	3/2												19.7 [500.3]	47
4442-95		3/4	1	TEFC	115-208/230	9/5												26.2 [665.4]	58
4443-95		3/4	3	TEFC	208-230/460	3/2												25.7 [652.7]	52

(\*) Standard NPT (female) pipe thread.

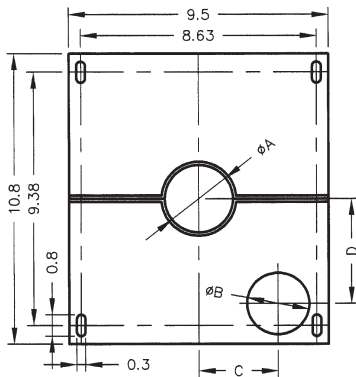
(\*\*) This dimension may vary due to motor manufacturer's specifications.

(+) 3-Phase models can also operate on 50 Hz (This will change Full Load Amps, Service Factor, RPM and Priming Capabilities).

NOTE: Dimensions are in inches (millimeters) and have a tolerance of  $\pm 1/8"$ .

NOTE: Electric supply for ALL motors must be within  $\pm 10\%$  of nameplate voltage rating (e.g. 230V  $\pm 10\%$  = 207 to 253).

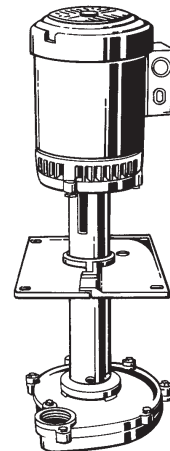
### Mounting Bracket Dimensions



Model	A	B	C	D	Ship Wt. (Lbs.)
4410-90	2.0 [50.8]	1.1 [27.9]	1.8 [45.7]	2.1 [53.3]	8
4420-90	2.5 [63.5]	2.2 [55.8]	2.9 [73.6]	3.8 [96.5]	8

### Standard Features

- Cast Iron Casing and Column
- 3/4" to 1-1/2" NPT Discharge Port
- Includes Universal Mounting Bracket
- Self-cleaning, Semi-open Stainless Steel Impeller
- Single or Three Phase 56C Motor Available
- 1/8 to 3/4 HP TEFC Motor, 1725 RPM
- Maximum Temperature 200° F
- QSP - Quick Ship Pumps



**Maximum Recommended Viscosity: 500 SSU**

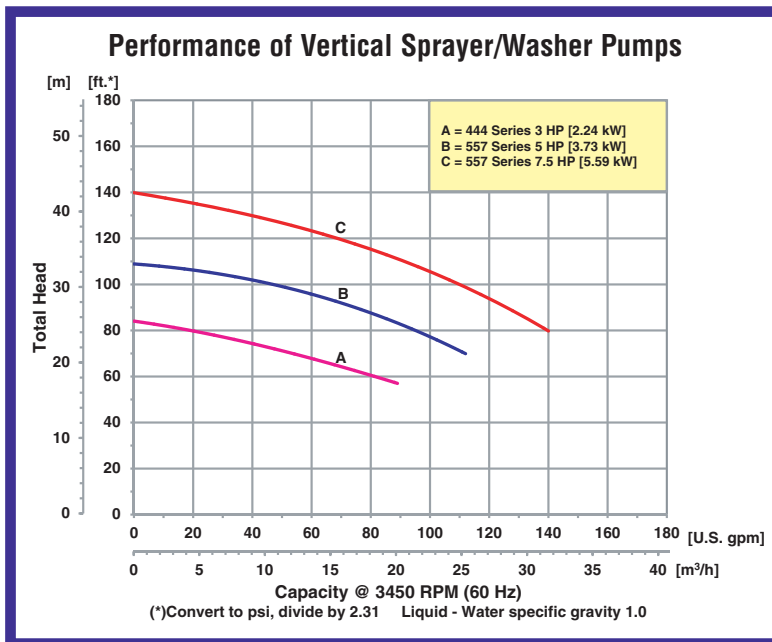
# Vertical Sealless Sprayer/Washer Pumps

- **Cast Iron Construction with 300 Series Investment Cast Stainless Steel Impeller**
- **Stainless Steel Pump Shaft**
- **No Bottom Bearing!**
- **Dual Volute Design Reduces Radial Load on Motor**
- **Maximum Temperature 200° F**
- **Maximum Flow 140 GPM**
- **Maximum Head 140 Ft. (61 PSI)**
- **Stainless Steel Suction Screen**
- **Includes Heavy Duty Universal Mounting Plates**
- **3 HP to 7-1/2 HP Totally Enclosed Fan Cooled (TEFC) Motor**
- **Standard 56C or JM Shaft Motors**



Model 5571-95

AMT Vertical Sealless Sprayer/Washer pumps are designed for OEM, automotive and industrial washing machines, parts cleaners, spray booths and cooling towers. "No bottom bearing" design and stainless steel impeller resists erosion from abrasives and ensures a long, maintenance free life for the pump. CNC machined stainless steel pump shafts. Built-in stainless steel suction screen protects pump from clogging and damage caused by large solids. Heavy duty universal mounting plates permit easy installation into existing tanks, booths, equipment, etc.



**MESA AGRO-INDUSTRIAL CORP.**  
 BOMBAS DE AGUA --FILTROS --COMPRESORES DE AIRE --GENERADORES DE ELECTRICIDAD  
 TRACTORES E IMPLEMENTOS AGRICOLAS --PISTEROS Y SISTEMAS DE RIEGO --MANGAS --VALVULAS  
 TELS. 939-338-0607 --787-636-2132 - FAX. 787-740-0960  
 E-mail: mesaagro@hotmail.com - www.mesapr.com



For use with nonflammable liquids compatible with pump component materials.

## Pump Dimensional & Specification Data

Model	Curve	HP	PH	ENC	Voltage @ 60 Hz+	Full Load Amps	DIS*	A	B	C	D	E	L	W	H**	Ship Wt. (Lbs.)
4445-95	A	3	1	TEFC	230	14	1½	6.5 [165.1]	15.0 [381.0]	3.5 [88.9]	13.5 [342.9]	17.0 [431.8]	9.5 [241.3]	10.8 [274.3]	29.7 [754.3]	78
4446-95		3	3	TEFC	230/460	8/4										
5572-95	B	5	3	TEFC	208-230/460	14/7	1½	8.4 [213.3]	17.0 [431.8]	4.0 [101.6]	14.0 [355.6]	17.8 [452.1]	12.0 [304.8]	15.0 [381.0]	32.0 [812.8]	130
5571-95	C	7½	3	TEFC	208-230/460	18/9										

(\*) Standard NPT (Female) pipe thread.

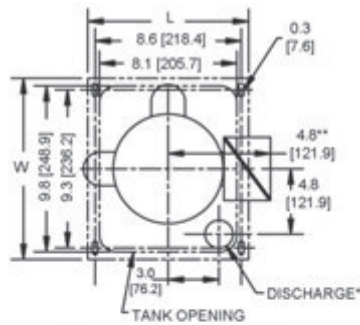
(\*\*) This dimension may vary due to motor manufacturer's specifications.

(+) 3-Phase models can also operate on 50 Hz. (This will change full load amps, service factor and RPM.)

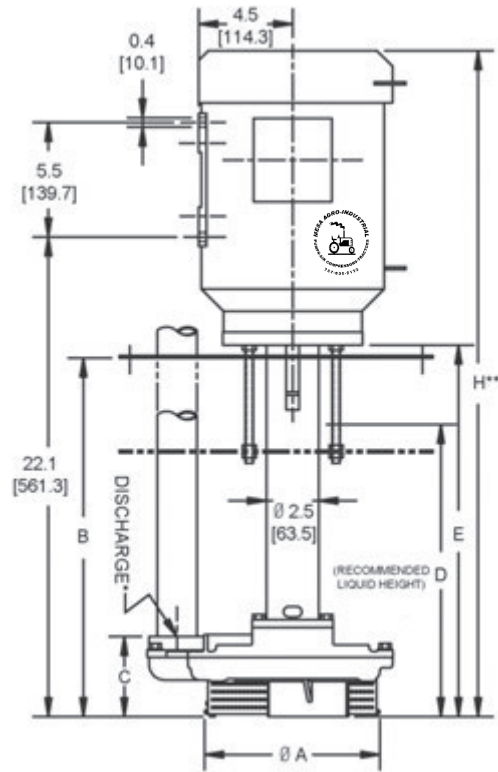
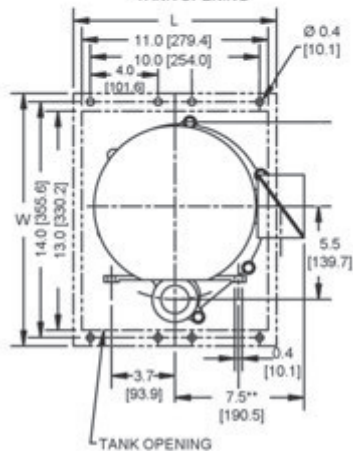
NOTE: Dimensions are in inches (millimeters) and have a tolerance of  $\pm 1/8"$ .

NOTE: Electric supply for **ALL** motors must be within  $\pm 10\%$  of nameplate voltage rating (e.g. 230V  $\pm 10\%$  = 207 to 253).

Models: 4445-95 & 4446-95



Models: 5571-95 & 5572-95



## Standard Features

- Cast Iron Construction with 300 Series Investment Cast Stainless Steel Impeller
- Stainless Steel Pump Shaft
- **No Bottom Bearing!**
- Maximum Temperature 200° F
- Maximum Flow 140 GPM
- Maximum Head 140 ft. (61 PSI)
- Stainless Steel Suction Screen
- Includes Heavy Duty Universal Mounting Plates
- Standard 56C or JM Shaft Motors

### Maximum Recommended Viscosity: 100 SSU

Hazardous Duty/Xplosion Proof motors available from stock ranging from 1 to 10 HP (applies to 557 Series only);  
**CALL FOR QUOTATION & LEAD TIME!**